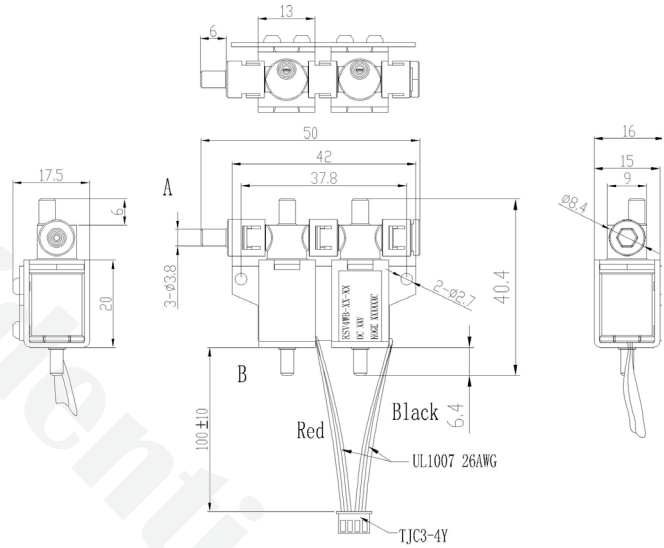
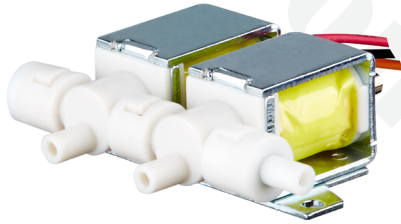


Solenoid Valve KSV4W Series KSV4WB



Unit:mm

Concept

A solenoid valve is an electromechanical controlled valve. The valve features a solenoid, which is an electric coil with a movable ferromagnetic core in its center. This core is called the plunger. In rest position, the plunger with a rubber gasket on the bottom closes off a small orifice. Thus, a small spring holds the plunger down to close the valve. An electric current through the coil creates a magnetic field. The magnetic field exerts a force on the plunger. As a result, the plunger is pulled toward the center of the coil so that the orifice opens.

When the solenoid is not powered, the magnetic field disappears, making the spring goes back up and the orifice will be closed.

Features

- ▶ Low noise
- ▶ Low air leakage
- ▶ High stability

Application

- ▶ Medical Instruments
- ▶ Medical Consumer Devices
- ▶ Industrial use
- ▶ Home Application

Model Key

Product	KOGE	Solenoid	Category	Type	SeriesA-Z	Voltage	Series	Output
Valve	K	S	V	4W	B	6	A	KSV4WB-6A

Specifications

Part Number	KSV4WB		
Voltage	DC 6V	DC 12V	DC 24V
Operating Voltage	DC 5.4~6.6V	DC 11.4~12.6V	DC 21.6~26.4V
Max. Pressure	260mmHg	260mmHg	260mmHg
Max. Current	450mA	300mA	175 mA
Type	Normally Closed	Normally Closed	Normally Closed
DC Resistance	27Ω±10%	80Ω±10%	275Ω±10%
Life	50,000 cycles	50,000 cycles	1,200,000 cycles
Testing Cycle	On 0.5s;Off 5s	On 0.5s;Off 3s	On 1s;Off 1s
Exhaust Speed	<6.0s (from 300mmHg to 15mmHg @500cc tank)	<6.0s (from 300mmHg to 15mmHg @500cc tank)	<6.0s (from 300mmHg to 15mmHg @500cc tank)

Materials

Metal nozzle	Steel
Plastic nozzle	PC
Washer	Rubber

Similar Products

	6V	12V	24V
X		KSV4WA-12A-2A	KSV4WA-24A-2AA
X		KSV4WC-12A-2F	KSV4WC-24A-1A
X		X	KSV4WD-24A-3A