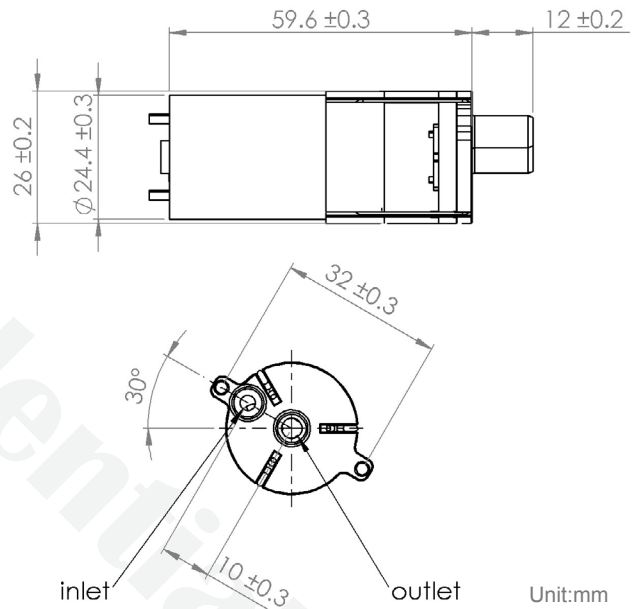


Rotary Diaphragm Pump KPW26 Series KPW26A



Concept

Piston pumps and plunger pumps are reciprocating positive displacement pumps that use a plunger or piston to move media through a cylindrical chamber.

They use a mechanism (typically rotational) to create a reciprocating motion along an axis, which then builds pressure in a cylinder or working barrel to force gas or fluid through the pump. The pressure in the chamber actuates the valves at both the suction and discharge points.

Specifically, air flow rate is proportional to motor speed, piston stroke, and piston diameter.

Features

- ▶ Compact size
- ▶ Low noise
- ▶ Low energy consumption
- ▶ High stability

Application

- ▶ Medical treatment
- ▶ Coffee maker
- ▶ Water dispensers
- ▶ Household application
- ▶ Fountain, aquariums

Model Key

Category	KOGE	Pump	Type	Pump Head Size	Series A~Z	Voltage	Series	Output
Diaphragm	K	P	W	26	A	12	A1	KPW26-12A1

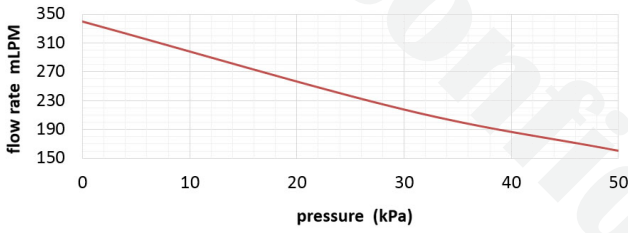
Specifications

P/N	Flow Rate (mL/min)	Maximum Pressure (kPa)	Current (mA)	Suction Stroke (m)	Noise (dB)	Life	Testing Cycle
KPW26A-12A1	250~350	>180	< 50	< 2	< 40	6,000 cycles	On 10min;Off 5min
KPW26A-12A2	650~750	> 200	< 120	< 2	< 45	570H	On 5min;Off 10s @Suction Height 0.3m
KPW26A-12A3	900~1000	> 200	< 200	< 2	< 50	500H	On 60s;Off 5s @Suction Height 0.2m; Head of delivery 0.6m
KPW26A-12A4	1000~1200	> 200	< 300	< 2	< 55		
KPW26A-06H1	350~450	> 180	< 150	< 2	< 45	60,000 cycles	On 60s;Off 30s @ Head of delivery 0.3m
KPW26A-24A1	650~750	> 180	< 100	< 2	< 50	100H	continuous
KPW26A-24A3	1000~1200	> 200	< 250	< 2	< 55	50,000 cycles	On 60s;Off 5s@Suction Height 0.2m;Head of delivery 0.5m

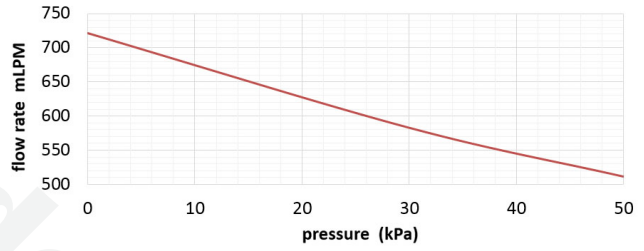
KOGE reserves the right to make technical changes without notice.

Curve Graph

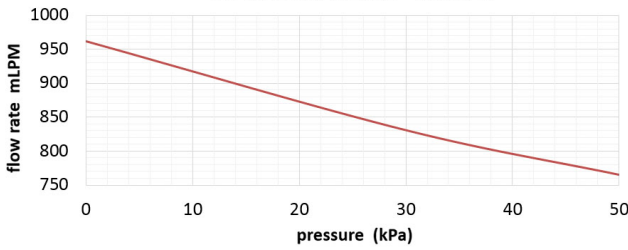
KPW26A-12A1 DC12V



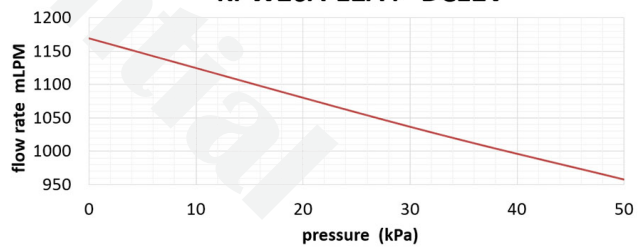
KPW26A-12A2 DC12V



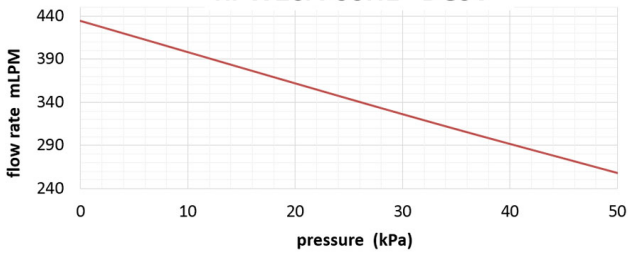
KPW26A-12A3 DC12V



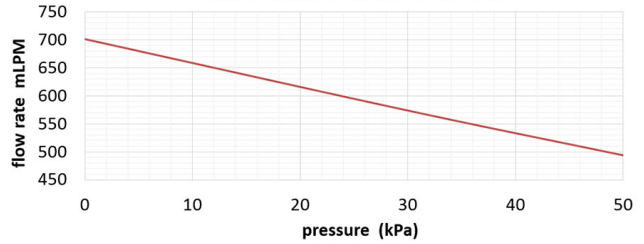
KPW26A-12A4 DC12V



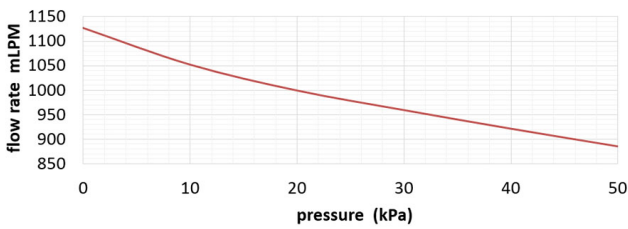
KPW26A-06H1 DC6V



KPW26A-24A1 DC24V



KPW26A-24A3 DC24V



Materials

Nozzle	PPO
Valve	NBR
Diaphragm	EPDM
Motor	DC brush