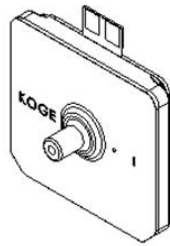
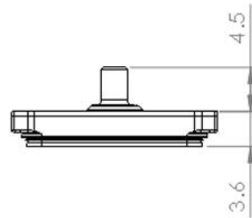
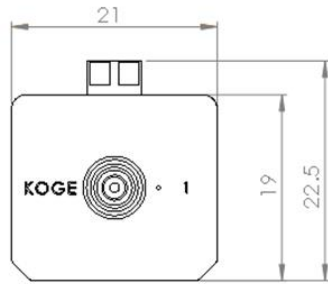


KPP21A-14A

Piezoelectric Air Compressor

<Automatic Exhaust Type>

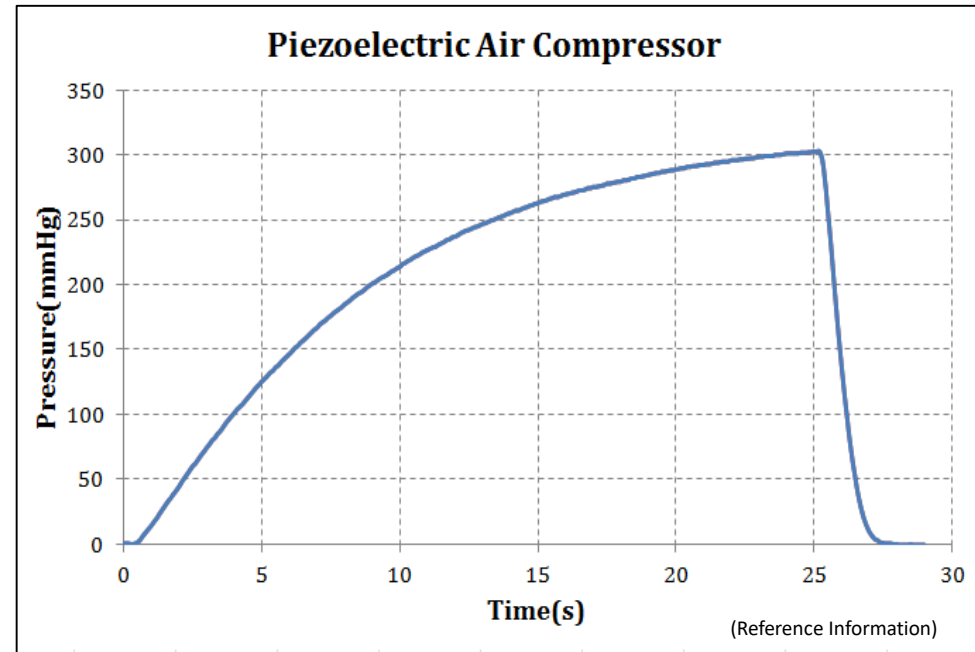
Product Dimension



立體圖
Unit: MM

- Mini dimension: 21*19*3.6 mm
- Extremely light: 3.5 g
- Silence operation
- Low power consumption

Product Performance



Product Specification

Electrical Properties		Physical Properties		Pneumatic Properties	
Input Voltages	6~18 V _{DC}	Noise	<35dB	Flow Rate	>100mL/min
Power consumption	<1W	Cycle Life	>30000	Static Pressure	0~300mmHg



Koge Micro Tech Co., Ltd

T +886-2-22266860 F +886-2-22266864 W www.koge.com

(Reference Information)